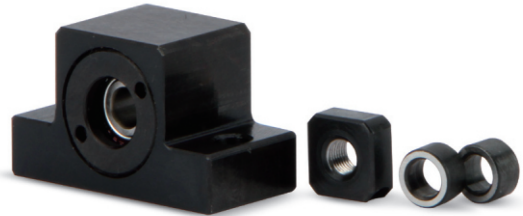
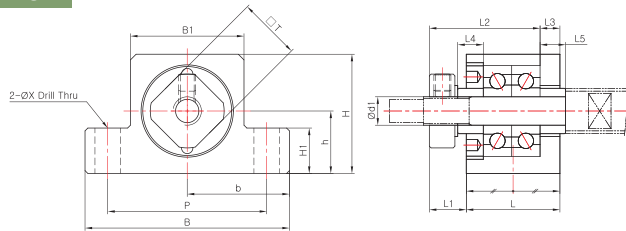


SUPPORT UNIT : EK SERIES

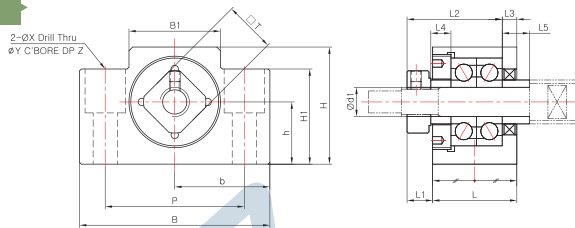


滾珠螺桿支撐座

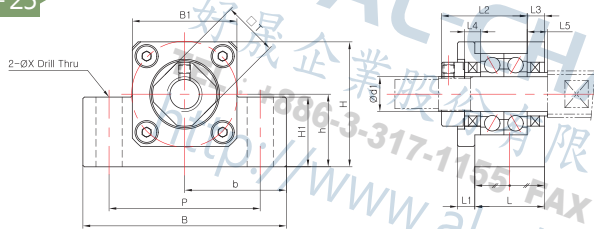
EK-4~EK-5



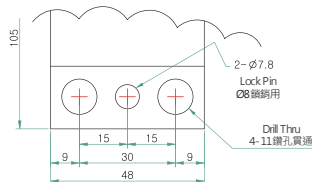
EK-6~EK-8



EK-10~EK-25



EK-25



規格

產品型號	主要尺寸(mm)																	重量(g)		
	本體													軸環						
	d1	L	L1	L2	L3	B	H	b±0.02	h±0.02	B1	H1	P	X	Y	Z	□T	L4		L5	
EK-4 P5/P0-C7	4	15	5.5	17.5/18.5	3/2	34	19	17	10	18	7	26	4.5	-	-	10	4.5/3.5	4.5/3.5	50	
EK-5 P5/P0-C7	5	16.5	5.5/6.5	19.5	3.5	36	21	18	11	20	8	28	4.5	-	-	11	5.5/4.5	5.5/4.5	68	
EK-6	6	20	5.5	22	3.5	42	25	21	13	18	20	30	5.5	9.5	11	12	5	7	120	
EK-8	8	23	7	26	4	52	32	26	17	25	26	38	6.6	11	12	14	5.5	7.5	230	
EK-10	10	24	6	29.5	6	70	43	35	25	36	24	52	9	-	-	16	5.5	5.5	430	
EK-12	12	24	6	29.5	6	70	43	35	25	36	24	52	9	-	-	19	5.5	5.5	420	
EK-15	15	25	6	36	5	80	50	40	30	41	25	60	11	-	-	22	10	10	530	
EK-20	20	42	10	50	10	95	58	47.5	30	56	25	75	11	-	-	30	11	11	1310	
EK-25	25	48	13	59	14	105	68	52.5	35	66	25	85	<參考圖面規格>				35	14	14	1950

※ EK-4, EK-5 以外的其他產品，同一型號軸承和等級無關規格尺寸都相同。