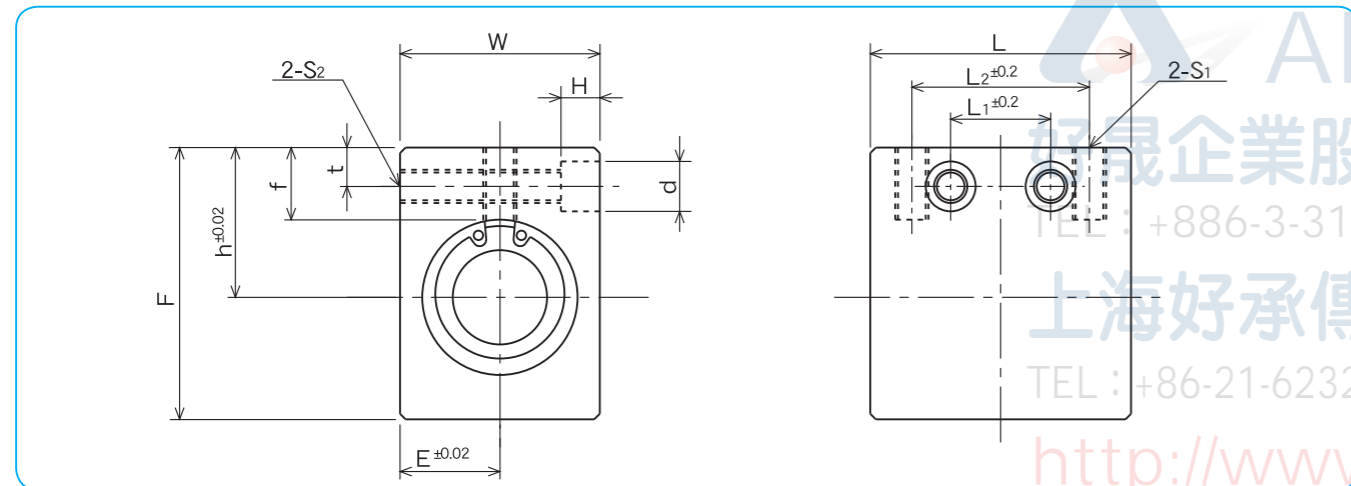
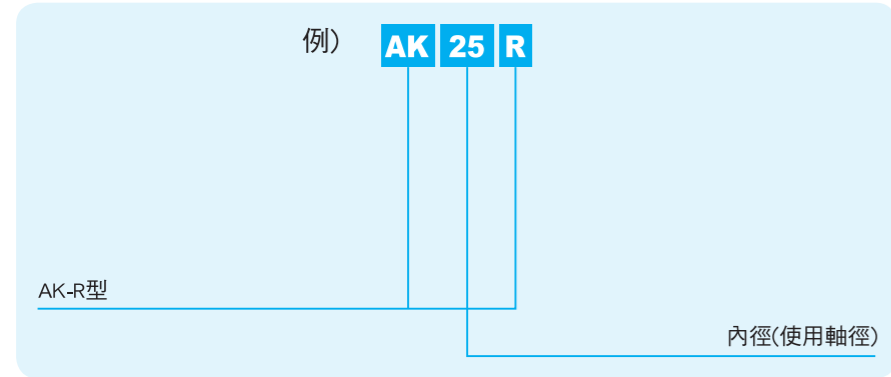


**AK-R型**  
—簡潔式軸承座—



規格構成



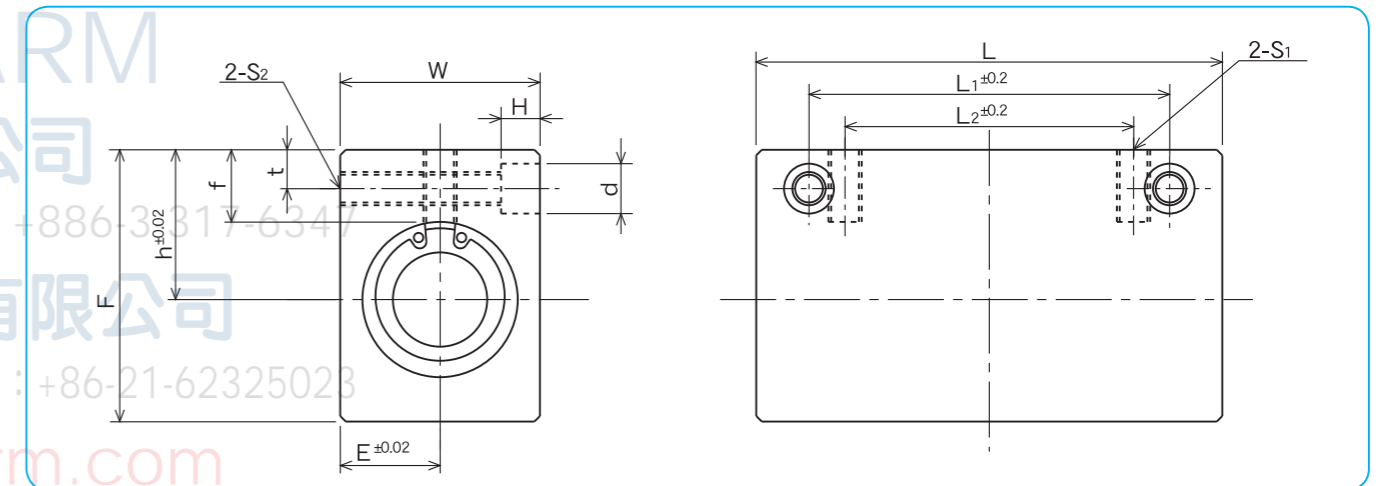
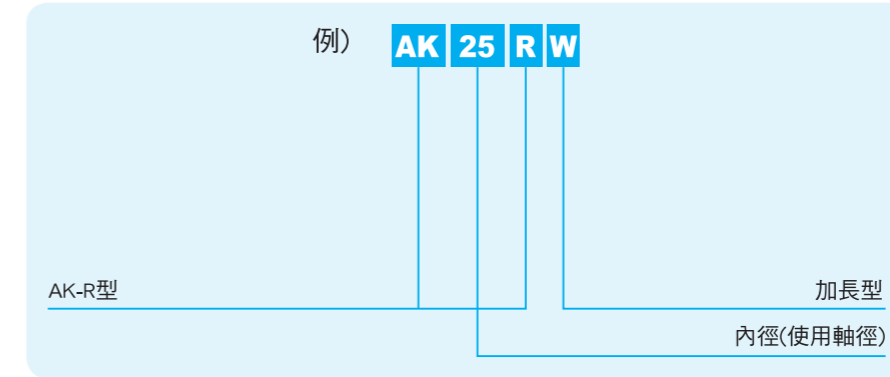
規格	軸徑		主要尺寸													基本額定荷重		容許迴轉數	質量
	mm	容許差 μm	h	E	W	L	F	L <sub>2</sub>	S <sub>1</sub>	f	L <sub>1</sub>	t	S <sub>2</sub>	d	H	C	Co		
<b>AK 6R</b>	6	+4 -5	14	8	16	27	22	18	M4	8	9	5	M4	6	5	78	176	300	27
<b>AK 8R</b>	8		16	10	20	32	26	20	M5	8.5	10	5	M4	6	5	137	314	300	48
<b>AK10R</b>	10		19	13	26	39	32	27	M6	9.5	15	6	M5	8	6	157	372	300	94
<b>AK12R</b>	12	+3 -6	20	14	28	40	34	27	M6	9.5	15	6	M5	8	6	274	588	300	105
<b>AK13R</b>	13		25	15	30	42	43	28	M6	13.5	16	7	M6	9	7	323	686	300	151
<b>AK16R</b>	16		27	18	36	47	49	32	M6	13	18	7	M6	9	7	451	882	250	238
<b>AK20R</b>	20	+3 -7	31	21	42	54	46	36	M8	15	18	8	M8	11	8	647	1,180	250	328
<b>AK25R</b>	25		37	26	52	65	65	42	M10	17	22	9	M10	14	10	882	1,860	250	669
<b>AK30R</b>	30		40	29	58	74	71	44	M10	17.5	22	9	M10	14	10	1,180	2,650	200	856

1N≒0.102kgf

**AK-RW型**  
—簡潔式軸承座加長型—



規格構成



規格	軸徑		主要尺寸													基本額定荷重		容許迴轉數	質量
	mm	容許差 μm	h	E	W	L	F	L <sub>2</sub>	S <sub>1</sub>	f	L <sub>1</sub>	t	S <sub>2</sub>	d	H	C	Co		
<b>AK 6RW</b>	6	+4 -5	14	8	16	46	22	20	M4	8	30	5	M4	6	5	126	352	300	48
<b>AK 8RW</b>	8		16	10	20	56	26	30	M5	8.5	42	5	M4	6	5	222	628	300	89
<b>AK10RW</b>	10		19	13	26	68	32	36	M6	9.5	50	6	M5	8	6	254	744	300	175
<b>AK12RW</b>	12	+3 -6	20	14	28	70	34	36	M6	9.5	50	6	M5	8	6	444	1,180	300	196
<b>AK13RW</b>	13		25	15	30	74	43	42	M6	13.5	55	7	M6	9	7	523	1,370	300	281
<b>AK16RW</b>	16		27	18	36	84	49	52	M6	13	65	7	M6	9	7	731	1,760	250	450
<b>AK20RW</b>	20	+3 -7	31	21	42	94	54	58	M8	15	70	8	M8	11	8	1,050	2,360	250	626
<b>AK25RW</b>	25		37	26	52	128	65	80	M10	17	100	9	M10	14	10	1,430	3,720	250	1,299
<b>AK30RW</b>	30		40	29	58	138	71	90	M10	17.5	110	9	M10	14	10	1,910	5,300	200	1,662

1N≒0.102kgf