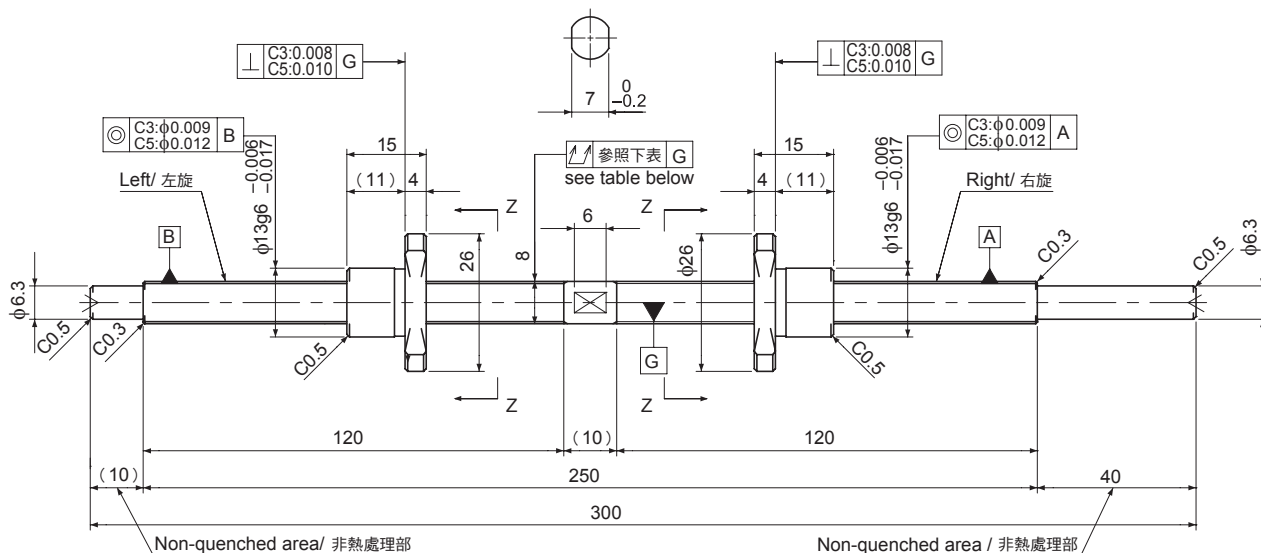


# SD0801

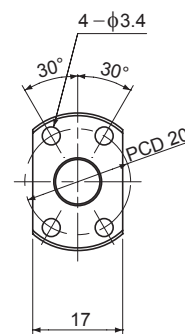
Shaft dia. (軸徑)  $\phi 8$  Lead (導程) 1mm

# C3&C5



Unit (單位): mm

Ball Screw Specifications		主要技術參數
Ball size	鋼珠直徑	$\phi 0.8$
Number of thread	螺紋數	1
Thread direction	旋轉方向	Left & Right 左右
Shaft root dia.	螺桿谷徑	$\phi 7.3$
Number of circuit	循環數	1×3
Shaft, Nut material	螺桿、螺帽材質	SCM415H
Surface hardness	螺紋部表面硬度	HRC58~62 (Thread area)
Anti-rust treatment	防鏽處理	Anti-rust oil 防鏽油



View Z-Z  
Z-Z 視圖

Unit (單位): mm

Ball Screw Model 滾珠螺桿型號	Travel 行程	Grade 精度	Lead accuracy 導程精度		Total Run-out 偏擺量 $\updownarrow$	Axial play 軸向間隙	Preload Torque 預壓扭矩 Nm	Basic Load Rating 基本額定荷重 N	
			Travel deviation 代表移動量誤差 $e_p$	Variation 變動 $V_u$				Dynamic 動額定荷重 $C_a$	Static 靜額定荷重 $C_{0a}$
SD0801-120L120R300C3	105	C3	$\pm 0.010$	0.008	0.050	0	~0.018	650	1300
SD0801-120L120R300C5	105	C5	$\pm 0.020$	0.018	0.065	~0.005	—		

Note 1) Please designate end-journal profile with your sketch.

Note 2) Absolute position of both Nuts related to the Screw Shaft is not under the control.

註1) 軸端的追加工請提供圖面進行指示。

註2) 未規定左右螺帽相對於螺桿的絕對位置。