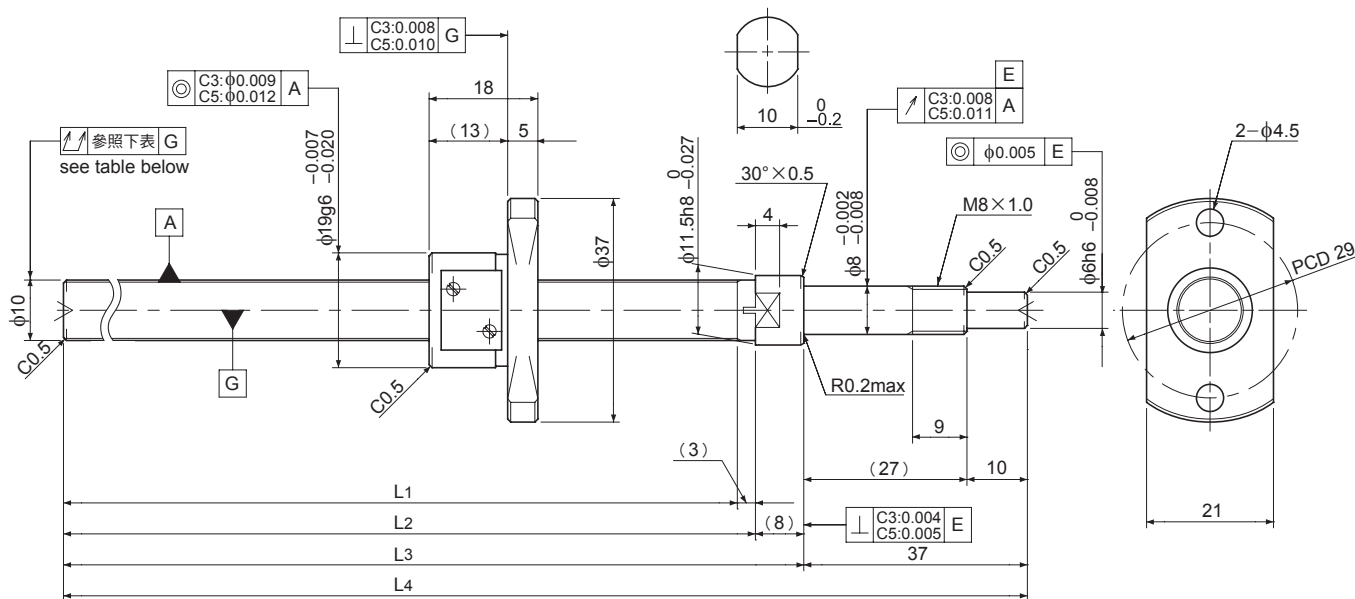


# SG1001

Shaft dia. (軸徑)  $\phi 10$  Lead (導程) 1mm

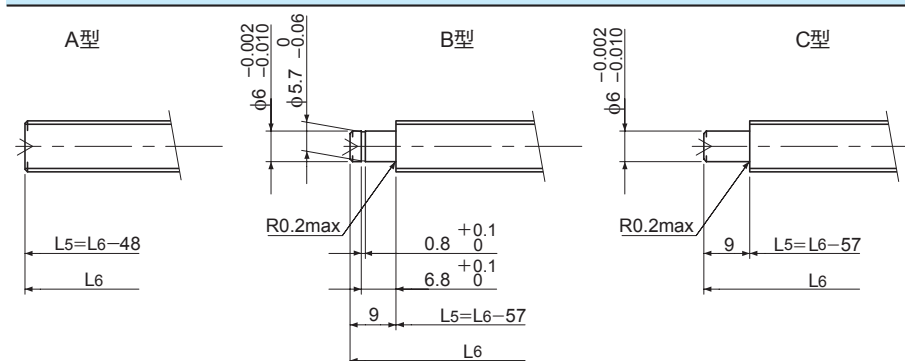
C3&C5



Unit (單位): mm

Ball Screw Specifications	主要技術參數
Ball size 鋼珠直徑	$\phi 0.8$
Number of thread 螺紋數	1
Thread direction 旋轉方向	Right 右旋
Shaft root dia. 螺桿谷徑	$\phi 9.3$
Number of circuit 循環數	$3.7 \times 1$
Shaft, Nut material 螺桿、螺帽材質	SCM415H
Surface hardness 螺紋部表面硬度	HRC58~62 (Thread area)
Anti-rust treatment 防鏽處理	Anti-rust oil 防鏽油

Supported-side end-journal profile 支持側軸端加工形狀



L5: Thread length after end-journal machining. 追加工後的螺牙長度  
L6: Total length after end-journal machining. 追加工後的總長度

Support-unit Recommendation 推薦的支持座	Supported-side 支持側	Fixed-side 固定側
	MSU-8CS/8GS,EF8	MSU-8C/8G,EK8

D-type: 上記以外の形状

Unit (單位): mm

Ball Screw Model 滾珠螺桿型號	Travel 行程	Grade 精度	Shaft length 螺桿長度				Lead accuracy 導程精度		Total Run-out 偏擺量	Axial play 軸向間隙	Preload Torque 預壓扭矩 Nm	Basic Load Rating 基本額定荷重 N	
			L1	L2	L3	L4	Travel deviation 代表移動量誤差 $e_p$	Variation 變動 $V_u$				Dynamic 動額定荷重 $C_a$	Static 靜額定荷重 $C_oa$
SG1001-112R160C3	90	C3	112	115	123	160	$\pm 0.010$	0.008	0.035	0 Spacer Ball 間隔鋼珠 (1:1)	~0.020	530	1000
SG1001-162R210C3	140	C3	162	165	173	210	$\pm 0.010$	0.008	0.040				
SG1001-212R260C3	190	C3	212	215	223	260	$\pm 0.012$	0.008	0.040				
SG1001-262R310C3	240	C3	262	265	273	310	$\pm 0.012$	0.008	0.040				
SG1001-112R160C5	90	C5	112	115	123	160	$\pm 0.020$	0.018	0.040	~0.005	—	840	2000
SG1001-162R210C5	140	C5	162	165	173	210	$\pm 0.020$	0.018	0.055				
SG1001-212R260C5	190	C5	212	215	223	260	$\pm 0.023$	0.018	0.055				
SG1001-262R310C5	240	C5	262	265	273	310	$\pm 0.023$	0.018	0.055				

Note) Please refer to P.A-17 for order code of end-journal machining.

註) 追加工の型號指定方式請參照P.A-17。