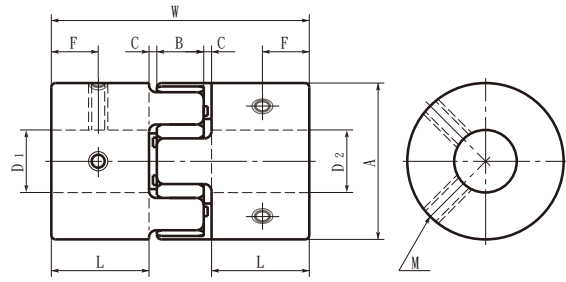


外徑 φ40



外徑 φ55 - φ95

性能

| 型號 | 彈性間隔體 ² | | 最大孔徑 (mm) | 常用 ^{*1} 扭矩 (N·m) | 最大 ^{*1} 扭矩 (N·m) | 零背隙 ^{*3} 容許傳遞 扭矩 (N·m) | 最大轉速 (min ⁻¹) | 慣性力矩 ^{*2} (kg·m ²) | 靜態扭轉剛性 (N·m/rad) | 偏心 (mm) | 偏角 (°) | 軸向 偏差 (mm) | 質量 ^{*2} (g) | 彈性間隔 體硬度 (JIS) |
|--------|--------------------|-------|-----------|---------------------------|---------------------------|---------------------------------|---------------------------|---|------------------|---------|--------|------------|----------------------|----------------|
| | 緊固型 | 簡易拆卸型 | | | | | | | | | | | | |
| MJC-14 | BL | EBL | 7 | 0.7 | 1.4 | 0.1 | 45000 | 2.0x 10 ⁻⁷ | 8 | 0.15 | 1 | +0.6 0 | 6.6 | A80 |
| MJC-20 | BL | EBL | 11 | 1.8 | 3.6 | 0.2 | 31000 | 1.1x 10 ⁻⁶ | 16 | 0.2 | 1 | +0.8 0 | 17 | |
| MJC-30 | BL | EBL | 16 | 4 | 8 | 0.5 | 21000 | 6.2x 10 ⁻⁶ | 46 | 0.2 | 1 | +1.0 0 | 44 | |
| MJC-40 | BL | EBL | 25 | 4.9 | 9.8 | 1.2 | 15000 | 3.7x 10 ⁻⁵ | 380 | 0.15 | 1 | +1.2 0 | 130 | |
| MJC-55 | BL | EBL | 32 | 17 | 34 | | 11000 | 1.6x 10 ⁻⁴ | 1400 | 0.2 | 1 | +1.2 0 | 320 | |
| MJC-65 | BL | EBL | 38 | 46 | 92 | | 9000 | 3.6x 10 ⁻⁴ | 2800 | 0.2 | 1 | +1.4 0 | 520 | |
| MJC-80 | BL | EBL | 45 | 95 | 190 | | 7000 | 1.1x 10 ⁻³ | 3200 | 0.2 | 1 | +1.8 0 | 1000 | |
| MJC-95 | BL | EBL | 55 | 130 | 260 | | 6000 | 2.3x 10 ⁻³ | 3600 | 0.2 | 1 | +2.0 0 | 1500 | |
| MJC-14 | WH | EWH | 7 | 1.2 | 2.4 | 0.1 | 45000 | 2.0x 10 ⁻⁷ | 14 | 0.1 | 1 | +0.6 0 | 6.6 | |
| MJC-20 | WH | EWH | 11 | 3 | 6 | 0.2 | 31000 | 1.1x 10 ⁻⁶ | 29 | 0.15 | 1 | +0.8 0 | 17 | |
| MJC-30 | WH | EWH | 16 | 7.5 | 15 | 0.5 | 21000 | 6.2x 10 ⁻⁶ | 73 | 0.15 | 1 | +1.0 0 | 44 | |
| MJC-40 | WH | EWH | 25 | 10 | 20 | 1.2 | 15000 | 3.7x 10 ⁻⁵ | 570 | 0.1 | 1 | +1.2 0 | 130 | |
| MJC-55 | WH | EWH | 32 | 35 | 70 | | 11000 | 1.6x 10 ⁻⁴ | 1600 | 0.15 | 1 | +1.4 0 | 320 | |
| MJC-65 | WH | EWH | 38.1 | 95 | 190 | | 9000 | 3.6x 10 ⁻⁴ | 3000 | 0.15 | 1 | +1.5 0 | 520 | |
| MJC-80 | WH | EWH | 45 | 190 | 380 | | 7000 | 1.1x 10 ⁻³ | 5300 | 0.15 | 1 | +1.8 0 | 1000 | |
| MJC-95 | WH | EWH | 55 | 265 | 530 | | 6000 | 2.3x 10 ⁻³ | 6200 | 0.15 | 1 | +2.0 0 | 1500 | |
| MJC-14 | RD | ERD | 7 | 2 | 4 | 0.1 | 45000 | 2.0x 10 ⁻⁷ | 22 | 0.1 | 1 | +0.6 0 | 6.6 | A98 |
| MJC-20 | RD | ERD | 11 | 5 | 10 | 0.2 | 31000 | 1.1x 10 ⁻⁶ | 55 | 0.1 | 1 | +0.8 0 | 17 | |
| MJC-30 | RD | ERD | 16 | 12.5 | 25 | 0.5 | 21000 | 6.2x 10 ⁻⁶ | 130 | 0.1 | 1 | +1.0 0 | 44 | |
| MJC-40 | RD | ERD | 25 | 17 | 34 | 1.2 | 15000 | 3.7x 10 ⁻⁵ | 1200 | 0.1 | 1 | +1.2 0 | 130 | |
| MJC-55 | RD | ERD | 32 | 60 | 120 | | 11000 | 1.6x 10 ⁻⁴ | 2600 | 0.1 | 1 | +1.4 0 | 320 | |
| MJC-65 | RD | ERD | 38.1 | 160 | 320 | | 9000 | 3.6x 10 ⁻⁴ | 4900 | 0.1 | 1 | +1.5 0 | 520 | |
| MJC-80 | RD | ERD | 45 | 325 | 650 | | 7000 | 1.1x 10 ⁻³ | 6500 | 0.1 | 1 | +1.8 0 | 1000 | |
| MJC-95 | RD | ERD | 55 | 450 | 900 | | 6000 | 2.3x 10 ⁻³ | 8900 | 0.1 | 1 | +2.0 0 | 1500 | |
| MJC-14 | GR | EGR | 7 | 2.4 | 4.8 | 0.1 | 45000 | 2.0x 10 ⁻⁷ | 66 | 0.08 | 1 | +0.6 0 | 6.6 | |
| MJC-20 | GR | EGR | 11 | 6 | 12 | 0.2 | 31000 | 1.1x 10 ⁻⁶ | 87 | 0.08 | 1 | +0.8 0 | 17 | |
| MJC-30 | GR | EGR | 16 | 16 | 32 | 0.5 | 21000 | 6.2x 10 ⁻⁶ | 200 | 0.08 | 1 | +1.0 0 | 44 | |
| MJC-40 | GR | EGR | 25 | 21 | 42 | 1.2 | 15000 | 3.7x 10 ⁻⁵ | 3000 | 0.08 | 1 | +1.2 0 | 130 | |
| MJC-55 | GR | EGR | 32 | 75 | 150 | | 11000 | 1.6x 10 ⁻⁴ | 9000 | 0.08 | 1 | +1.4 0 | 320 | |
| MJC-65 | GR | EGR | 38.1 | 200 | 400 | | 9000 | 3.6x 10 ⁻⁴ | 13000 | 0.08 | 1 | +1.5 0 | 520 | |
| MJC-80 | GR | EGR | 45 | 405 | 810 | | 7000 | 1.1x 10 ⁻³ | 14000 | 0.08 | 1 | +1.8 0 | 1000 | |
| MJC-95 | GR | EGR | 55 | 560 | 1120 | | 6000 | 2.3x 10 ⁻³ | 15000 | 0.08 | 1 | +2.0 0 | 1500 | |

*1 無需根據負荷變化修正常用扭矩和最大扭矩。但環境溫度高於30°C時，請依據下表中的溫度補正係數調整常用扭矩和最大扭矩。[MJC]的可用溫度為-20°C~60°C。

*2 最大孔徑時的數值。

*3 傳遞零背隙時，請使用緊固型彈性間隔體。

● 環境溫度、溫度補正係數

| 環境溫度 | 溫度補正係數 |
|------------|--------|
| -20°C~30°C | 1.00 |
| 30°C~40°C | 0.80 |
| 40°C~60°C | 0.70 |